

FAST FACTS

(Year End 2024)

Franklin PUD serves customers through Pasco, Connell, Kahlotus and other surrounding areas within Franklin County, WA.

84
employees



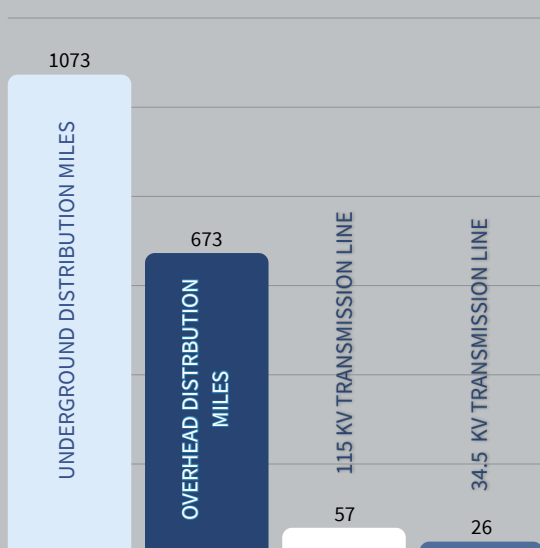
435
SQ MI service territory



22
substations



29,752
customers



Railroad Avenue Substation

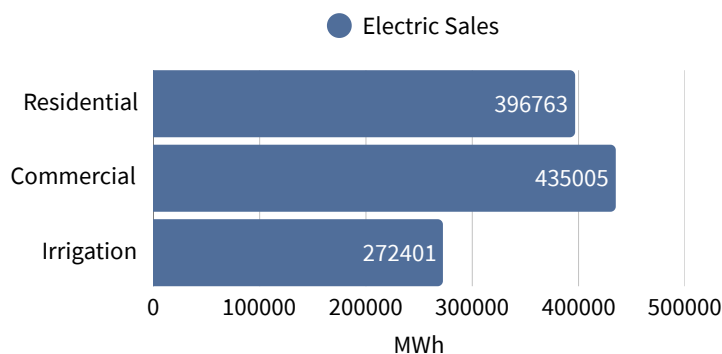
1,829
Total Line Miles

99.99%
Reliability Rating

130.40 aMW
Average System Load

259
System Peak Demand

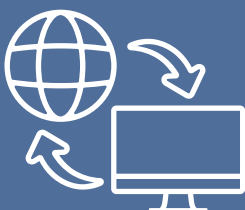
1,104,169
Retail Electric Sales
(MWh)



203,537
Wholesale Electric
Sales



33
Retail Service Providers



386
Miles of Fiber



FAST FACTS *Continued*

(Year End 2024)



46,046
customer calls recieved



36,617
in person transactions



814
customers receiving Senior Discount



222
customers receiving Disability Discount



354 New Residential Service Requests



District staff at the Senior Expo Event.

Debt Service Coverage

Change in Net Position	\$17,857,469
Adjustments for Debt Service:	
Depreciation	10,048,185
Bond Interest, Debt Premium / Discount Amortization and Issuance Costs	2,657,718
Non-cash pension adjustment	(997,216)
Revenue available for debt service	29,566,156
Annual debt service	5,226,586
Debt service coverage	5.66



\$11
Million
2024 Total Taxes Paid

\$1.9
Million
State Privilege Tax

\$3.4
Million
State Public Utility Tax

\$5.7
Million
City Tax*

*City taxes are collected directly from customers and remitted to the City

Top 10 Customers

Customer / Industry	kWh	Percentage of Total kWh	Retail Sales	Percentage of Total Electric Sales
Commercial 1 - Food Processing	110,669,133	10.0%	\$6,868,196	7.8%
Commercial 2 - Food Processing	31,231,400	2.8%	2,151,294	2.5%
Commercial 3 - Food Processing	29,206,304	2.6%	1,874,408	2.1%
Commercial 4 - Agriculture	28,594,986	2.6%	1,819,121	2.1%
Commercial 5 - Education	27,773,265	2.5%	2,047,172	2.3%
Commercial 6 - City Government	27,691,356	2.5%	1,922,498	2.2%
Commercial 7 - Agriculture	26,504,939	2.4%	1,831,912	2.1%
Commercial 8 - Food Processing	21,552,386	1.9%	1,384,689	1.6%
Commercial 9 - Food Processing	17,972,760	1.6%	1,183,935	1.4%
Commercial 10 - Corrections Facility	12,561,120	1.1%	784,462	0.9%
<i>Commercial Customers Total</i>	333,757,649	30.2%	\$21,867,687	24.9%
Total All Ratepayers	1,106,424,920		\$89,079,648	



Potatoes being processed at one of the District's food processing plants.