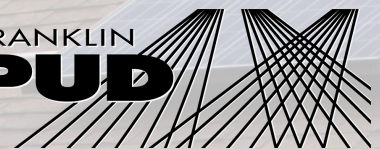


Residential

SOLAR

Customer Information Packet

FRANKLIN
PUD



For more information:



(509) 547-5591 or (800) 638-7701



franklin@franklinpud.com



www.franklinpud.com



Dear Valued Solar Customer,

Now that you've installed a solar power system on your home, we're excited to share some important details about how your monthly billing will work, the incentives you may be eligible for, and other helpful information.

This packet is designed to clarify common questions and includes:

A summary explaining the purpose of each meter on your home.

An example of how your monthly bill will appear with your solar production factored in.

A clear overview of what to expect regarding annual production incentives.

A copy of RCW 80.60.030: Net Metering of Electricity, for your reference.

A reminder:

For eligible participants, in order to receive your annual incentive payment, Franklin PUD **requires** all active solar participants to have a current W9 form on file.

If your banking information or mailing address has changed recently, please contact our Energy Services Department right away at 509-546-5967 to update your records. This will ensure timely processing of your payments.

We understand you may have questions as you begin generating your own clean energy. If anything in this packet isn't clear, or if you have additional questions, please don't hesitate to call our Customer Service Department at 509-547-5591.

WE ARE HERE TO HELP!

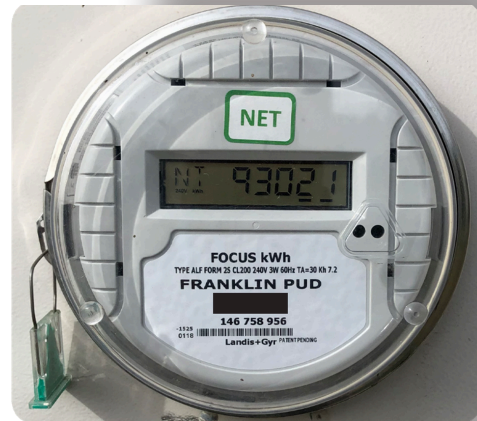
Please don't hesitate to call our Customer Service Department at **509-547-5591**.
www.franklinpud.com

UNDERSTANDING YOUR METERS “The Basics”

Your NET Meter:

Think of your net meter as the special electric meter Franklin PUD uses to figure out your monthly bill.

- ✓ The Net Meter can spin forward when you're using more power than you make, and spin backward when you're making more than you use.
- ✓ We check it every month, and you'll see those numbers on your bill.
- ✓ You'll know it's a net meter because it has a **"NET"** sticker on it.



Your PRODUCTION Meter::

A production meter is super simple: it just tracks how much electricity your solar panels make. This information is important because it's what Franklin PUD sends to the State to process the incentive payment, if eligible.

- ✓ Unlike your regular meter, this one only moves forward as your solar panels produce power.
- ✓ We read your production meter once a year, during the first week of July. Franklin PUD sends that reading directly to the State to make sure you get your payment.
- ✓ You'll know you're looking at your production meter because it'll have a **"PROD"** sticker on it



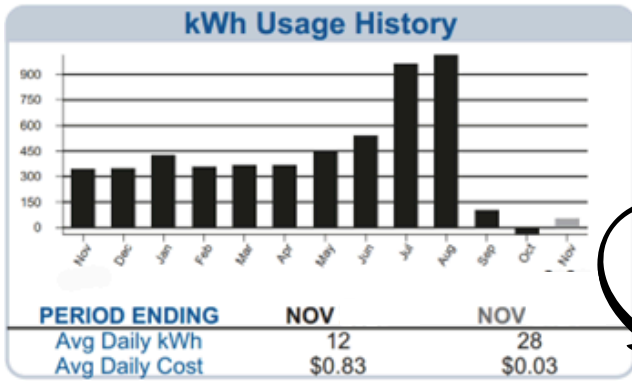
UNDERSTANDING BILLING STATEMENTS

FOR CUSTOMERS WHO INTERCONNECTED PRIOR TO JULY 1, 2025

PRODUCING MORE THAN YOU USE

As an example on the bill below, the customer produced 40 kWh over what they used, increasing their bank balance from the starting amount that they had the previous month as follows:

Account Type	Meter Number	Services		Days	Readings		Code	Meter Multiplier	kWh Usage
		From	To		Previous	Present			
USAGE		07/10/25	08/06/25	28	440	709	MR	1	269
GENERATION		07/10/25	08/06/25	28	338	647	MR	1	-309
RES-S111		07/10/25	08/06/25	28	102	62	MR	1	-40



Service Detail	
Previous Balance	44.49
Payment	-44.49
Balance Forward	\$0.00
System Charge	34.00
Pasco Utility Tax	2.89
Total Current Charges Due 08/27/2025	\$36.89
Total Amount Due	\$36.89

YOUR BILL INCLUDES CHARGES FOR ELECTRICITY, DELIVERY SERVICES, GENERAL ADMINISTRATION AND OVERHEAD, METERING, TAXES, CONSERVATION EXPENSES, AND OTHER ITEMS.

BANK BEG 0 INCREASE/DECREASE: 40 BANK END 40

Even if you produce more than you use, you will still receive a monthly bill with the System Charge and any applicable taxes.

Bank Balance Information

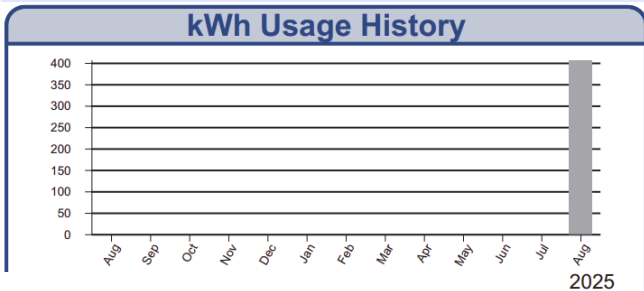
(Previous bank balance) + (Excess produced on this billing) = (bank balance after this billing) 0 + 40 = 40

*Any unused credit in the solar bank will be cleared on March 31st each year without any compensation to the customer. RCW 80.60.030

USING MORE THAN YOU PRODUCE

As an example on this bill, the customer used more kWh than they produced by 247 kWh, decreasing their bank balance from the starting amount they had after the previous billing as follows:

Account Type	Meter Number	Services		Days	Readings		Code	Meter Multiplier	kWh Usage
		From	To		Previous	Present			
USAGE		07/04/25	08/04/25	31	10,320	10,735	MR	1	415
GENERATION		07/04/25	08/04/25	31	10,029	10,197	MR	1	-168
RES-S111		07/04/25	08/04/25	31	97,523	97,611	MR	1	247



PERIOD ENDING	AUG 2024	AUG 2025
Avg Daily kWh	0	21
Avg Daily Cost	\$0.00	\$1.04

YOUR BILL INCLUDES CHARGES FOR ELECTRICITY, DELIVERY SERVICES, GENERAL ADMINISTRATION AND OVERHEAD, METERING, TAXES, CONSERVATION EXPENSES, AND OTHER ITEMS.

BANK BEG	159	INCREASE/DECREASE:	-159	BANK END	0
----------	-----	--------------------	------	----------	---

Bank Balance Information
 (Previous bank balance) - (kWh used over amount produced on this billing) = (bank balance after this billing) 159 - 159 = 0

Service Detail	
Previous Balance	44.49
Payment	-44.49
Balance Forward	\$0.00
kWh Energy Charge	88 kWh @ 0.0732
System Charge	6.44
Pasco Utility Tax	34.00
	3.44
Total Current Charges Due 08/27/2025	\$43.88
Total Amount Due	\$43.88

The customer's bank didn't have enough to cover all of the kWh used - the customer is billed the difference from their "Bank Beg" balance and the amount they used. In this case it would be 247- 159 = 88 kWh. The 88 kWh is charged at the current residential rate in this case .0732. Current rates are available at www.franklinpud.com under the Rates tab.

*Any unused credit in the solar bank will be cleared on March 31st each year without any compensation to the customer. RCW 80.60.030

PRODUCING MORE THAN YOU USE:

As an example on the bill below, the customer produced more than what they used, increasing their bank balance from the starting amount that they had the previous month as follows:

Account Type	Meter Number	Services		Days	Readings		Code	Meter Multiplier	kWh Usage
		From	To		Previous	Present			
USAGE		08/19/25	09/21/25	33	43,861	44,061	MR	1	200
GENERATION		08/19/25	09/21/25	33	18,423	20,230	MR	1	-1,807

kWh Usage History

PERIOD ENDING	NOV	NOV
Avg Daily kWh	12	28
Avg Daily Cost	\$0.83	\$0.03

YOUR BILL INCLUDES CHARGES FOR ELECTRICITY, DELIVERY SERVICES, GENERAL ADMINISTRATION AND OVERHEAD, METERING, TAXES, CONSERVATION EXPENSES, AND OTHER ITEMS.

Service Detail

Previous Balance	41.40
Payment	-41.40
Balance Forward	\$0.00
Usage Rate	200 kWh @ 0.0732 14.64
Generation Rate	-1,807 kWh @ 0.0571 -103.18
	-1,607 -88.54
	Bank +/- 88.54
	0.00
kWh Energy Charge	
System Charge	41.00
Pasco Utility Tax	3.49
Total Current Charges Due 10/15/2025	\$44.49
Total Amount Due	\$44.49

BANK BEG	\$39.60	INCREASE/DECREASE:	\$88.54	BANK END	\$128.14
----------	---------	--------------------	---------	----------	----------

Even if you produce more than you use, you will still receive a monthly bill with the System Charge and any applicable taxes.

Bank Balance Information

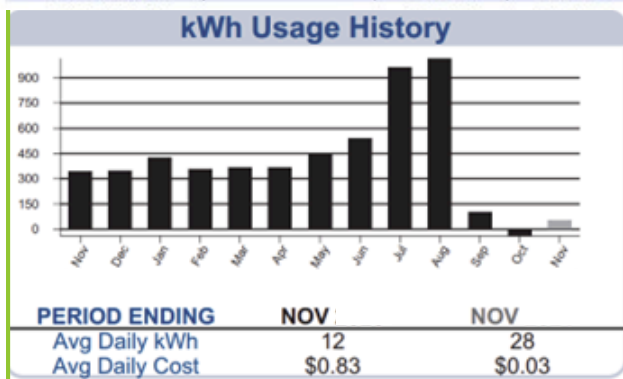
BANK BEG (Previous bank balance) + INCREASE (amount produced is greater than the amount used on this billing) = BANK END (bank balance after this billing)
 $\$39.60 + \$88.54 = \$128.14$

*Any unused credit in the solar bank will be cleared on March 31st each year without any compensation to the customer. RCW 80.60.030

USING MORE THAN PRODUCED:

As an example on this bill, the customer used more than they produced decreasing their bank balance from the starting amount they had after the previous billing as follows:

Account Type	Meter Number	Services		Days	Readings		Code	Meter Multiplier	kWh Usage
		From	To		Previous	Present			
USAGE		08/19/25	09/21/25	33	54,366	55,125	MR	1	759
GENERATION		08/19/25	09/21/25	33	12,522	13,001	MR	1	-479



Service Detail

Previous Balance		86.03
Payment		-86.03
Balance Forward		\$0.00
Usage Rate	759 kWh @ 0.0732	55.56
Generation Rate	-479 kWh @ 0.0571	-27.35
	280	28.21
	Bank +/-	-14.35
		13.86
kWh Energy Charge		41.00
System Charge		4.66
Pasco Utility Tax		
Total Current Charges Due 10/15/2025		\$59.52
Total Amount Due		\$59.52

YOUR BILL INCLUDES CHARGES FOR ELECTRICITY, DELIVERY SERVICES, GENERAL ADMINISTRATION AND OVERHEAD, METERING, TAXES, CONSERVATION EXPENSES, AND OTHER ITEMS.

BANK BEG	\$14.35	INCREASE/DECREASE:	-\$14.35	BANK END	\$0.00
----------	---------	--------------------	----------	----------	--------

Bank Balance Information

BANK BEG (Previous bank balance) - DECREASE (amount used is greater than the amount produced on this billing) = BANK END (bank balance after this billing)
 $\$14.35 - \$14.35 = 0$

The customer's bank didn't have enough to cover all of the amount needed (\$28.21). The customer is billed the difference from that amount and what is available from their "Bank Beg" balance (\$14.35). In this example it would be $\$28.21 - \$14.35 = \$13.86$

*Any unused credit in the solar bank will be cleared on March 31st each year without any compensation to the customer. RCW 80.60.030

YOUR ANNUAL SOLAR PRODUCTION INCENTIVE: WHAT YOU NEED TO KNOW

We know you might have questions about your solar incentive payment, and we're here to help clarify the process.

WILL I RECEIVE A STATE INCENTIVE?

Currently, annual State incentives are provided to existing participants who have been previously registered and approved by the Washington State University (WSU) Energy Program. Please note that at this time, new participants are not eligible for annual incentives due to current funding limitations. If you have any questions about your eligibility, the best resource is the WSU Energy Program directly.

You can reach them at (360) 956-2000 or by emailing solarprogram@energy.wsu.edu.

WHEN WILL MY PRODUCTION METER BE READ?

Franklin PUD will read your solar production meter each year, typically during the first week of July.

WHEN CAN I EXPECT MY ANNUAL INCENTIVE PAYMENT?

The timing of your incentive payment can vary, as it depends on the processing time from the State's administrator (WSU Energy Program).

WHAT DO I NEED TO DO TO ENSURE I RECEIVE MY ANNUAL INCENTIVE?

If you have already received an incentive payment from Franklin PUD in the past, you generally don't need to do anything further. **However**, if your mailing address or banking information has changed, please contact our Energy Services Department right away to update your records.

If you are a **new participant** who has purchased a home with existing solar installation please get in touch with our Energy Services team to determine if the property has an active incentive with the WSU Energy Program.

CONTACT US: Franklin PUD Energy Services



BY PHONE: **509-546-5967**

BY EMAIL: **ENERGYSERVICES@FRANKLINPUD.COM**

MON - THU 7 AM TO 6 PM - CLOSED FRIDAYS

REVISED CODE OF WASHINGTON 80.60.030

Net energy measurement, charges for kilowatt-hour consumption, and credits for excess kilowatt-hour generation—Required calculation—Unused credit—Net metering system—Customer-generator meter aggregation.

Consistent with the other provisions of this chapter, the net energy measurement, billed charges for kilowatt-hour consumption, and credits for excess kilowatt-hour generation by a net metered system, must be calculated in the following manner:

- (1) The electric utility shall measure the net electricity produced or consumed during the billing period, in accordance with normal metering practices.
- (2) If the electricity supplied by the electric utility exceeds the electricity generated by the customer-generator's net metering system and fed back to the electric utility during the billing period, the customer-generator shall be billed for the net electricity supplied by the electric utility, in accordance with normal metering practices.
- (3) If excess electricity generated by the net metering system during a billing period exceeds the electricity supplied by the electric utility during the same billing period, the customer-generator:
 - (a) Shall be billed for the appropriate customer charges for that billing period, in accordance with RCW 80.60.020; and
 - (b) Shall be credited for the excess kilowatt-hours generated during the billing period, with the credit for kilowatt-hours appearing on the bill for the following billing period.
- (4) If a customer-generator requests, an electric utility shall provide such a customer-generator meter aggregation.
 - (a) For a customer-generator participating in meter aggregation, credits for kilowatt-hours earned by the customer-generator's net metering system during the billing period first shall be used to offset electricity supplied by the electric utility at the location of the customer-generator's designated meter.
 - (b) A customer-generator may aggregate a designated meter with one additional aggregated meter located on the same parcel as the designated meter or a parcel that is contiguous with the parcel where the designated meter is located.
 - (c) For the purposes of (b) of this subsection, a parcel is considered contiguous if they share a common property boundary, but may be separated only by a road or rail corridor.
 - (d) A retail electric customer who is a customer-generator and receives retail electric service from an electric utility at an aggregated meter must be the same retail electric customer who receives retail electric service from such an electric utility at the designated meter that is located on the premises where such a customer-generator's net metering system is located.
 - (e) Credits for excess kilowatt-hours earned by the net metering system at the site of a designated meter during a billing period shall be credited by the electric utility for kilowatt-hour charges due at the aggregated meter at the applicable rate of the aggregated meter.
 - (f) If credits generated in any billing period exceed total consumption for that billing period at both meters that are part of an aggregated arrangement, credits are retained pursuant to subsections (3) and (5) of this section.
 - (g) Credits carried over from one billing period to the next pursuant to (f) of this subsection must be applied in subsequent billing periods in the same manner described under (a) and (e) of this subsection.
 - (h) Meters so aggregated shall not change rate classes due to meter aggregation under this section.
- (5) On March 31st of each calendar year, any remaining unused credits for kilowatt-hours accumulated during the previous year shall be granted to the electric utility, without any compensation to the customer-generator.
- (6) Nothing in this section prohibits a utility from allowing aggregation under terms different than the requirements of subsection (4) of this section if a customer-generator has an existing arrangement for meter aggregation in effect or a customer submits a written request for aggregation on or before July 1, 2019.
- (7) Nothing in this section prohibits the owner of multifamily residential facility from installing a net metering system as defined in RCW 80.60.010 assigned to a single designated meter located on the premises of the multifamily residential facility where the tenants are not individually metered customers of the utility and distributing any benefits of the net metering to tenants of the facility where the net metering system is located. The utility must measure the net energy produced and provide credit to the single designated meter to which the net metering system is assigned in accordance with subsections (1) through (3) of this section or under the terms of a standard rate or tariff schedule established under RCW 80.60.020(3). The distribution of benefits to tenants of such a system, if any, is the responsibility of the owner of the net metering system and not the responsibility of the utility.